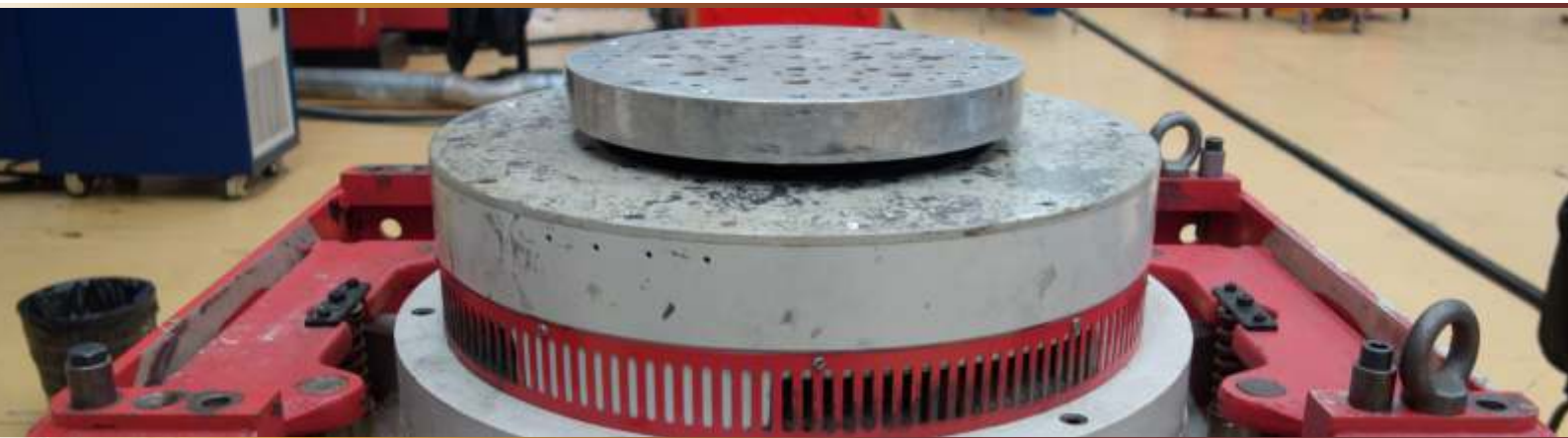


# Preventive and curative maintenance



Let us maintain your test means so they can reach their highest capabilities!

“ Our reactive and efficient maintenance team will simplify your everyday life! ”

## OUR SPECIFIC SERVICES

- Fixation tools manufacturing
- Assistance and training in test means use
- Refurbishing your equipment
- Relocation
- Test bench conception

## OUR STRENGTHS :

- 30+ year experience
- Presence in Europe and North Africa
- Our experience was developed through maintenance of our own test means
- Our means put at your disposition

## Preventive maintenance

Performance and capabilities of your test means are preserved by:

- preserving original manufacturer's technical specifications
- Recommendations for optimal use
- Free hotline support
- Vibration controllers verification
- Calibration (accelerometer and conditioner)

&

## Curative maintenance

Test means failures and dysfunction resolved through:

- thorough diagnosis
- professional technician intervention under 48 hours
- continuous stock of consumables

We offer you a maintenance service adapted to your needs. Our interventions frequency and duration will be defined in advance and engage us regarding your equipment availability rate. We establish a maintenance report and we deliver a verification form referring to ISO17025 requirements.



**ENVIRONNE'TECH**  
GROUPE EMITECH

# Vibrators, hydraulic and electrodynamic excitators, shock machines...

- You have to ensure your test means availability?
- Your company counts several outlying sites?
- Your material park is diversified and counts exceptional means?

**We offer you a full service with controlled cost!**

You will have a unique interlocutor for all the interventions, including metrology service. LDS certified for installation and maintenance, we also intervene for all vibrator brands and on water and air technologies.

During your material immobilization, our test means will be at your disposal (38 excitators located on 6 sites).

Our maintenance contract is designed with you and for you in order to optimize the cost with an attractive and simple pricing.



**Standard : +33 4 74 93 83 83**  
**bourgoin@environnetech.fr**  
**www.environnetech.fr**

Environne'Tech, entity of Emitech group, offers a wide range of characterization and qualification tests required by the industry: acoustic, vibratory, climatic, mechanical, corrosion, dust, hydraulic, electrical, fluid tests... EMC, electrical, lightning and radio tests are realized in other laboratories from Emitech Group (Lyon, Paris area, Angers, Rennes, Montpellier, Sochaux, Toulouse).

Emitech Group counts 5 subsidiaries: Eurocem, Adetests, Environne'Tech, Dirac and Pieme. In 2016, its 17 laboratories welcome 310 employees with a 30.3M€ turnover.

In addition to its testing activities, Emitech Group has diversified its services to share its know-how and its experience with its clients. Now, Emitech offers a full range of services:

- training
- Engineering: numerical simulation, test benches conception
- Calibration
- Maintenance

Most of the main business area of our economy are included in Emitech Group competencies: telecommunication, medical sector, public sector, industry, energy, railway, naval sector, automotive, aeronautics and space, defense...

**EMITECH GROUP**

